

# Encore<sup>®</sup> Enhance

Powder coating spray gun controller



## Modular and upgradable – an automatic and manual gun controller with configurable gun triggering for all powder applications.

Encore Enhance brings advanced control functionality to your automatic powder spray system. Whether it's venturi, dense-phase or Tribomatic<sup>®</sup>, Encore Enhance is the right choice no matter what powder application technology you use. Developed to provide a full range of offerings, the Encore controller is sure to enhance your powder productivity.



### Features and benefits

- **New system functionality**
  - **Peer-to-Peer (P2P) communication between controller interfaces makes life simple** with 'one-touch' triggering, recipe copy, recipe selection and color change
  - **Configurable automatic triggering enables**
    - P2P triggering and gun grouping
    - 'No part, no spray' identification
    - Remote PLC triggering
    - Simple triggering
  - **Control robot applications** to paint complex parts and hard to reach areas
  - **Self-diagnostic fault codes** take the guesswork out of troubleshooting
  - **Maintenance timers** provide advanced replacement part notification
  - **Configure in SCFM or m<sup>3</sup>/hr**
  - **Customize and store up to 99 recipes** for repeatable application accuracy
- **Scalable** – As your production requirements change, this controller can adapt with you. Easily add up to 10 modular automatic or manual gun controllers to your powder coating system in a single stack!\*
- **Flexible** – Convert your venturi application to dense-phase technology by simply adding Encore HD guns and pumps to your system

### Electrostatic and pneumatic operating modes

- **Patented Nordson Select Charge technology** is pre-set for deep cavity, re-coating or metallic powder applications
- **Custom electrostatic control** gives flexibility to set kV and AFC independently
- **Closed loop airflow control** ensures powder flow consistency
- **Smart Flow air pressure control** adjusts powder output without affecting your spray velocity

\*Maximum of 4 manual guns per stack



# Encore Enhance Controller - available system components

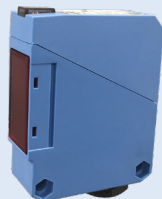
## Automatic spray guns



## Encore Manual Guns



## Photo eye



## Encore HD pump



## NHR Series Fluidizing Hoppers



## Encore Venturi Pump



## Encore Enhance controller specifications

Dimensions	Weight (Controller)	Input air pressure	Supply air hose	Gun air (electrode air wash)	Air consumption per gun (typ)	Electrical
<b>Height:</b> 71.16 in (1807.5 mm) <b>Width:</b> 24.61 in (625 mm) <b>Depth:</b> 23.68 in (601.4 mm)	<b>Controller:</b> 404 lbs (183 kg)	<b>Min:</b> 90 PSI (6.2 bar)  <b>Max:</b> 110 PSI (7.6 bar)	16 mm tube	0.25 scfm (0.42 m <sup>3</sup> /hr) @ 100 psi (6.9 bar) input pressure	<b>Venturi:</b> 6 scfm (10.2 m <sup>3</sup> /hr)  <b>HD:</b> 3 scfm (5.1 m <sup>3</sup> /hr)**	<b>Input:</b> 100-250 VAC, 1 phase, 50/60 Hz, 450 VA Max  <b>Output:</b> +/- 19 VAC, +/- 1.0 A

\*\*Single gun at 50% flow with 1.5 scfm (2.5 m<sup>3</sup>/hr) pattern air

© 2019 Nordson Corporation | All Rights Reserved | PWL-19-6090 | Issued 3/19

### Nordson Industrial Coating Systems

100 Nordson Drive  
Amherst, OH, 44001  
USA

**Phone:** +1.440.985.4000  
**www.nordson.com/ics**

/Nordson\_Coating

/NordsonICS

/company/nordson-industrial-coating-systems

Find your local Nordson office:  
**www.nordson.com/icslocations**

Performance by design

